



2017
**PENSA
FAQ'S**



2017 PENZA FAQ'S



WHAT IS THE PARENTERAL AND ENTERAL NUTRITION SOCIETY OF ASIA (PENSA) CONVENTION?

The PENSA Convention is a yearly gathering of physicians, dietitians, pharmacists and nurses who are interested and active in the practice of clinical nutrition from different countries in Asia. Esteemed speakers from Asia and the rest of the world are invited to give updates and expound on relevant topics in clinical nutrition. Hosting of the PENSA is being rotated among member countries each year. The Philippine Society for Parenteral and Enteral Nutrition (PhilSPEN) is the proud host of the 2017 PENSA convention. The Philippines first hosted the PENSA Convention in 2007.

WHEN AND WHERE IS THE 2017 PENZA CONVENTION?

The 2017 Parenteral and Enteral Nutrition Society of Asia (PENSA) convention will be held on November 19-21, 2017 at the Edsa Shangri-La Hotel, Mandaluyong City, Philippines



Edsa Shangri-La
MANILA

HOW MUCH IS THE REGISTRATION FEE FOR THE 2017 PENZA CONVENTION?



PROFESSIONALS



TRAINEES AND STUDENTS

LOCAL PARTICIPANT

PRE REG	PHP7,000 <small>(PhilSPEN member)</small>	PHP8,000 <small>(NON-PhilSPEN member)</small>	PHP6,000
ONSITE	PHP8,000 <small>(PhilSPEN member)</small>	PHP8,500 <small>(NON-PhilSPEN member)</small>	PHP7,000

INTERNATIONAL PARTICIPANT

PRE REG	USD 300	USD 250
ONSITE	USD 350	USD 300

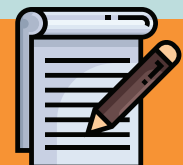
*Registration is done online.




WHAT IS THE THEME OF THE 2017 PENZA CONVENTION?

The theme for this year is "Expanding Horizons in Clinical Nutrition". The convention aims to equip participants with the wide range of application of clinical nutrition to different disease states and across all populations and disciplines.

PRE-REGISTRATION HAS BEEN EXTENDED TO OCTOBER 15, 2017!



2017 PENSAs FAQ'S



HOW DO I GO ABOUT ONLINE REGISTRATION?

1. Check your registrant type and pay the corresponding registration fee thru bank transfer or over the counter deposit.

HOW TO PAY:

1.1 After checking, you may proceed with payment thru the following accounts:



FOR INTERNATIONAL DELEGATES:

*** Bank transfer fees to be paid by delegate

DOLLAR ACCOUNT:

Acct Name: "**Philippine Society of Parenteral and Enteral Nutrition, Inc.**"

Acct No: **3894-0234-48**

Bank Name: **Bank of the Philippine Islands**

Bank Address : **279 E. Rodriguez, Sr. Avenue**

Quezon City

Swift code: **BOIPHMM**

FOR LOCAL DELEGATES:

PESO ACCOUNT:

Acct Name: "**Philippine Society of Parenteral and Enteral Nutrition, Inc.**" or "**PHILSPEN**"

Acct No: **3893-0918-73**

Bank Name: **Bank of the Philippine Islands**

Branch: **St. Luke's Branch**

- 1.2 Keep your transaction slip/deposit slip and obtain an image or scanned copy of it for uploading later.
2. Visit www.philspen.org to create an account using your email address that will be your default user name. (Please make sure that you have access to THIS email address.)
3. Check your email to activate your account.
4. Click on the **Sign in** link to log in to your account or visit www.philspen.org and select the **Register Now** Pensa 2017 event.
5. Upload image of your deposit slip and complete registration form with correct details and click **Submit**.
6. Successful online registrants will be sent email notification.

ARE THERE OTHER HOTELS NEAR THE VENUE?



Yes. These are nearby hotels to choose from:

RICHMONDE ORTIGAS • MARCO POLO HOTEL • OAKWOOD • LINDEN SUITES • JINJANG INN

UPDATE FOR SPEAKERS



- Speakers can contact the Scientific Committee regarding booking and confirmation of their hotel reservations.
- Convention delegates may book nearby hotels.

For hotel reservations, you may coordinate with **Ms Dianne Sy** through email at diannesy.30@gmail.com or by mobile at **+639176282075**.

WHAT ARE THE HIGHLIGHTS OF THE PENSAs 2017 CONVENTION?



1. Plenary sessions with Experts in Clinical Nutrition from Asia, Australia, Europe, and USA.
2. Presentation of the Asia Pacific consensus on: (1) definition of malnutrition, nutrition tools, requirements and adequacy of intake; (2) nutrition for the critically ill and (3) nutrition for surgical patients
3. SINGS and DANCE sessions
4. Simultaneous Lunch Symposia
5. Research Contest
6. Basic Nutrition Support (BNS) Sessions for pharmacists and for nurses
7. Life Long Learning (LLL) sessions with ESPEN teachers
8. Nutrition Support Team (NST) Summit
9. Fellowship Night
10. Exhibition area and Hospitality suites with the latest nutrition products and equipment.

2017 PENZA FAQ'S



IS THE LUNCH SYMPOSIUM BY INVITATION ONLY?

No, but the simultaneous lunch symposia have limited capacity depending on the venue. Participants must get lunch symposium ticket near the Isla Ballrooms at the start of each convention day to be accommodated to their lunch symposium of choice. Registration area is already open at 7am.



WHAT ARE THE SINGS AND DANCE SESSIONS?

The **SINGS** and **DANCE** are simultaneous sessions where participants can choose the sessions of their own interest. SINGS stands for **S**pecial **I**nterest in **N**utrition **G**roups and DANCE stands for **D**evelopments and **A**dvancements in **N**utrition **C**are and **E**ducation.



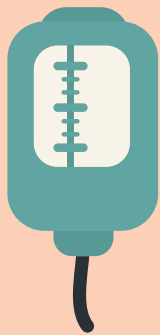
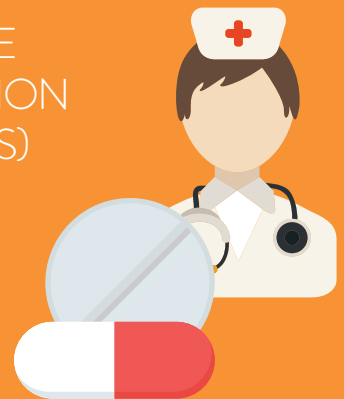
WHAT IS THE NST SUMMIT?

The Nutrition Support Team (NST) summit is a special session dedicated to recognize the contribution of the different NSTs in Asia to the advancement of clinical nutrition practice for holistic patient care.



WHAT ARE THE BASIC NUTRITION SUPPORT (BNS) SESSIONS FOR PHARMACISTS AND NURSES?

The BNS Sessions are a selection of timely and relevant topics for pharmacists and nurses, and is an adaptation of the BNS Courses developed by PhilSPEN, which caters to the training needs of pharmacists and nurses to enable them to actively participate in the Nutrition Support Teams (NSTs) of their hospitals. These sessions will be offered to all delegates interested in didactics and hands-on training for NSTs, and will be part of the simultaneous sessions to choose from.



WHAT IS THE LIFE LONG LEARNING (LLL) COURSE?

The LLL is a program developed by the European Society for Parenteral and Enteral Nutrition (ESPEN). This is a paying course with a registration fee of Php 2,000.00 (USD 40).

To pre-register, please email philspen_sec@yahoo.com. Limited slots available!

WHAT IS THE DRESS CODE FOR THE FELLOWSHIP NIGHT?

Casual attire but participants are encouraged to bring their best hat/ head gears during the fellowship night to be able to join the "best hat" contest.



WHAT IS THE DRESS CODE FOR THE CONVENTION?

Business attire



2017 PENSA FAQ'S



WHAT WILL I EXPECT DURING THE FELLOWSHIP NIGHT?

The national dance company of the Philippines will be performing during the fellowship night, after which a live band will entertain the delegates while enjoying the sumptuous buffet dinner or heavy cocktails. Participants are encouraged to bring their best hat/head gears during the fellowship night to be able to join the "best hat" contest



HOW CAN I JOIN THE RESEARCH CONTEST?

Research contest mechanics and deadline for submission of abstracts can be viewed at the PENSA website.



RESEARCH VILLAGE AT PENSA 2017

The Research Committee is thrilled to present the Research Village with a medical editor's help desk facilitated by the Think Science and Karger (Annals on Nutrition and Metabolism) journal editorial team.

LEARN ABOUT:

- Remedies for writing concerns
- Remedies and tips to help write with confidence
- Simple, practical tips and easy-to-use resources for paper publication



I HAVE OTHER QUERIES REGARDING REGISTRATION, HOW CAN I COMMUNICATE WITH YOU?

Please email **Dr. Reggie Divina - registration@pensa-2017.com**



WHAT ARE THE PRIZES FOR THE RESEARCH CONTEST?

USD 600
First Prize

USD 400
2nd Prize

USD 200
3rd Prize



I HAVE OTHER QUERIES REGARDING RESEARCH CONTEST, HOW CAN I COMMUNICATE WITH YOU?

Please email **Dr. Divina Cristy Redondo-Samin - abstracts@pensa-2017.com**



I HAVE GENERAL CONCERNS AND OTHER QUERIES, HOW CAN I COMMUNICATE WITH YOU?

Please email **Dr. Melissa Sy - secretariat@pensa-2017.com**

Contact number: **+632- 7211278**
(look for Ms. Elvie Deauna)

PhilSPEN office: **706 North Tower CHBC, St. Luke's Medical Center, E. Rodriguez Ave., Quezon City, Philippines**

